

# Consequences and Responses to Behaviour

Whilst we acknowledge that everyone accessing SELFA is an individual and consequences may need to be different, if any of the below takes place we will take prompt and appropriate steps to support our children, families, staff, volunteers and professionals.

We share a simplified version of our policy with children and young people.

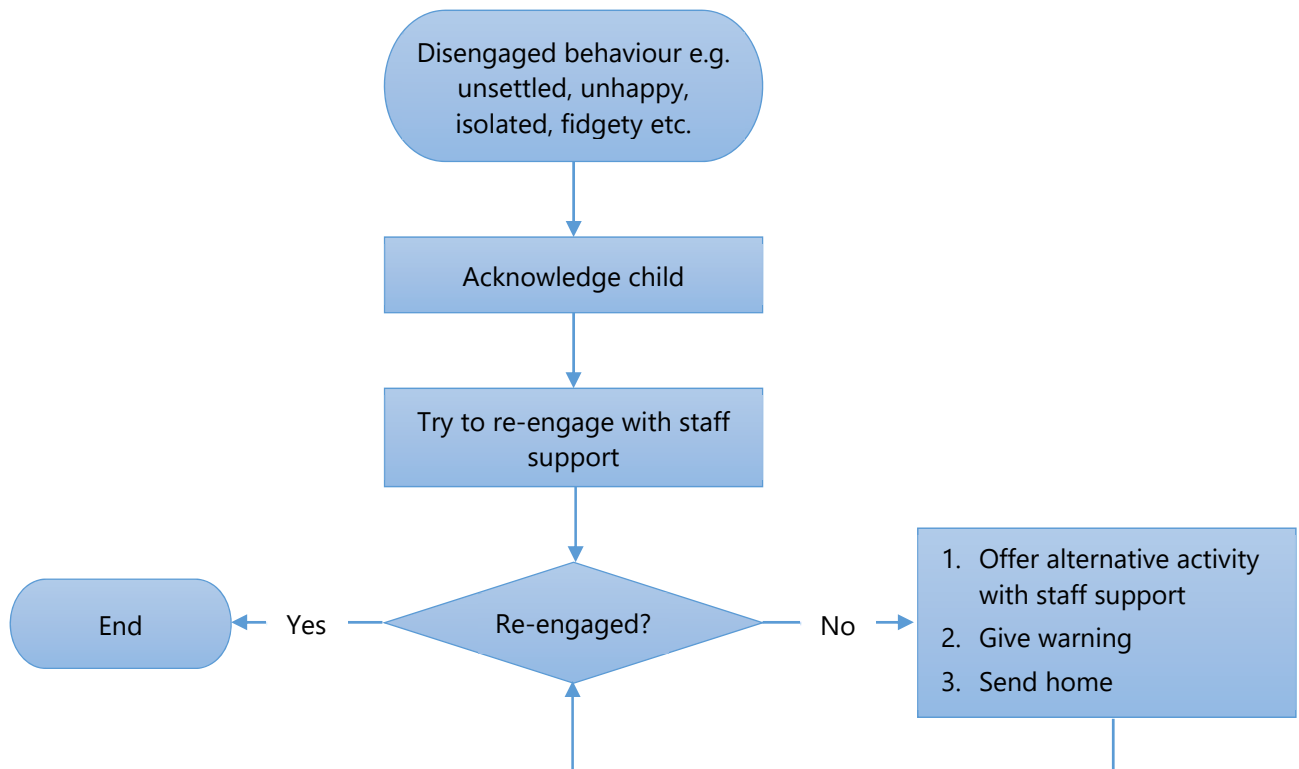
We believe that prompt and positive intervention can minimise inappropriate behaviour, therefore ALL staff will...

1. Acknowledge every child's concerns
2. Listen and take appropriate action
3. Be consistent with every child
4. Follow through with any agreed action

At SELFA we aim to build positive relationships with all children and young people. This helps everyone to feel secure and valued.

## Consequences at SELFA

### ***Behaviour Type: Disengaged***



## Behaviour Type: Unacceptable

